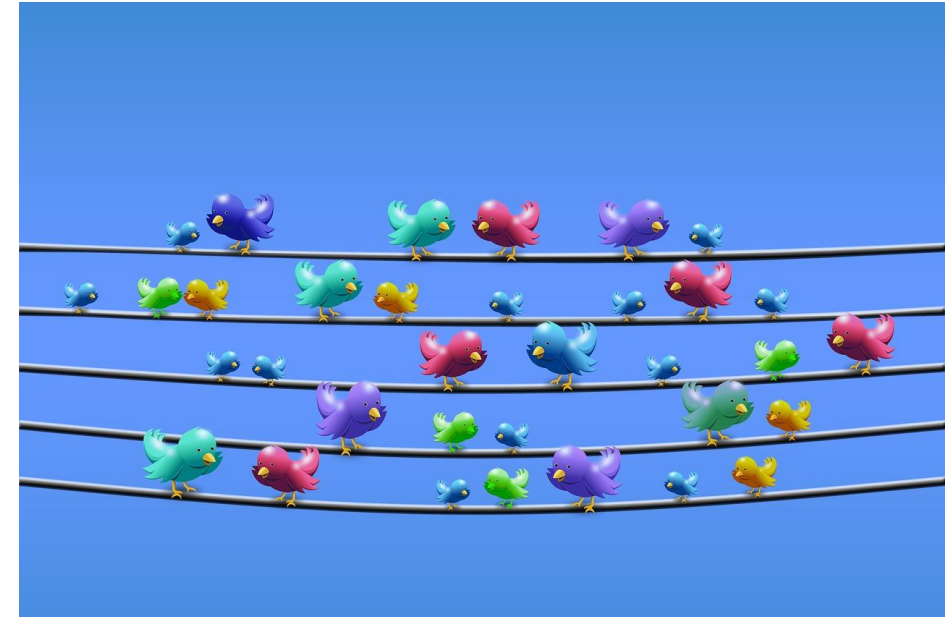


Social Media and Learning - Twitter

- Encouraging students to...
 - Share ideas and resources
 - Interact
 - Converse
 - Collaborate
- Subject hashtag #ETL523, #INF537, #INF532
- Collaboration hashtag - #CSURU
- Tweetchats
- Professional hashtags – Google for lists!



Julie Lindsay
Quality Learning & Teaching Leader (Online)
Lecturer
Faculty of Arts and Education
@julielindsay

Heather Bailie @hbailie · Aug 23
 Replying to @hbailie @aus_teach @KMalbon
 We don't just drink coffee #INF537

4 4

Lisa Nash @lisanash9 · Sep 16
 #INF537 does any of this sound familiar as we bring together our case study reports

1 5

Karen Malbon @KMalbon · 2h
 Evidence of a digital scholar or just one big mess? #inf537

3 5

Lisa Nash @lisanash9 · Sep 17
 Replying to @KMalbon @julielindsay
 Going to read yours now @KMalbon. Have posted mine too thinkspace.csu.edu.au/creativelearni... #INF537. Feedback was very constructive @julielindsay

2 5

T.K. Coleman liked

Karen Malbon @KMalbon · Sep 17
 Posted #INF537 digital scholarship paper on my blog bit.ly/2hazmDm Thanks for feedback @julielindsay

2 8

Adrienne Gillingham liked

Gretha Wocke @GrethaWocke · Sep 9
 KNArtefact post: bit.ly/2eV2kde, video part of artefact: bit.ly/2vVILcY. #INF532 #PLN . What do you think?@Kristiejade2017

ICSZ Personal Learning Networks
 An introduction to ICSZ faculty on personal learning networks. (This includes Marc-André Lalande's video on PLNs and references to Connected Educator's video... youtube.com

2 1

Adrienne Gillingham @adrigill7 · Sep 9
 Replying to @iste
 My KN journey has only just begun by connecting using social networking platforms such as FB and Twitter. And I am loving it #INF532

1

- Twitter is.....
- Visual
 - Multi-modal
 - Helps build empathy for learning
 - Encourages PLN building
 - Shares personality
 - And more.....!

Student self-determined learning

Student-led.....

- Organisation of tweet-chats
- Group work
- PLN development
- Connection with professionals, authors, and thought-leaders

